



2nd Grade News



~ Mrs. Beard ~ Ms. Byars ~ Ms. Freeman ~ Mrs. Gallimore ~ Mrs. Goodman ~ Ms. Harrison ~ Mrs. Huggins

News You Can Use (September 16-20)

- Students have homework that is due on Friday, September 20th.
- Don't forget to empty your child's binder each night.
- Bring a light jacket to school, please.
- If you have not joined PTA, please do so.
- Please send the Technology Contribution of \$25 as soon as possible.

Dates to Remember

September

- 24 Pep Rally Fun Run Kick-off
- 27 – Make Up Day – Fall Pictures

October

- 2 – Birthday Wednesday
- 3- 3rd Gr Music/Art Program
- 10- PTA Fun Run
12:30- 2-3
- 11- End Q 1
- 14-18 Fall Break (No school)

Spelling Words (Test on Friday, 9/27)

page	fine	home
nose	late	mice
space	cube	vote
size		

* Three additional words with short vowels will be added to the test. Students will also have two dictation sentences with long vowel words in the sentence. These sentences should have correct spelling, capitalization, and punctuation.

Learning Targets

Reading –

I can read and comprehend a nonfiction scientific text.

I can understand that ideas in a scientific text are connected and details occur in a certain order (sequence).

English –

I can identify and use reflexive pronouns correctly.

Spelling-

I can spell words with long vowels.

Math –

I can subtract double-digit numbers with and without regrouping.

Science-

I can define weathering and erosion.

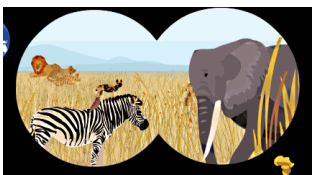
I can explain how wind, water, and ice can change rocks & soil, as well as the shape of the land.

Vocabulary (Test on Friday, 9/27)

1. **attention** (noun)- thinking, watching, or listening carefully
2. **branch** (noun)— part of a tree or bush
3. **chew** (verb)— use your teeth to break food into pieces or crush it
4. **crowd** (noun)— a large group of people in one place
5. **curious** (adjective)— want to learn or find out something
6. **dawn** (noun)— time of day when the sun comes up
7. **famous** (adjective)—to be known to a lot of people
8. **local** (adjective)- is nearby or having to do with a certain place. (noun)- locals are people who live in a certain place
9. **parade** (noun)- many people walking or marching down a road together, usually with bands, cars and flags
10. **village** (noun)- a small town

2nd Grade Website-

<http://aes2ndgrade.weebly.com>



adventureawaits@aes

Arlington Community Schools offers educational and employment opportunities without regard to race, color, creed, national origin, religion, sex, age or disability and adheres to the provisions of the Family Rights and Privacy Act (FERPA).